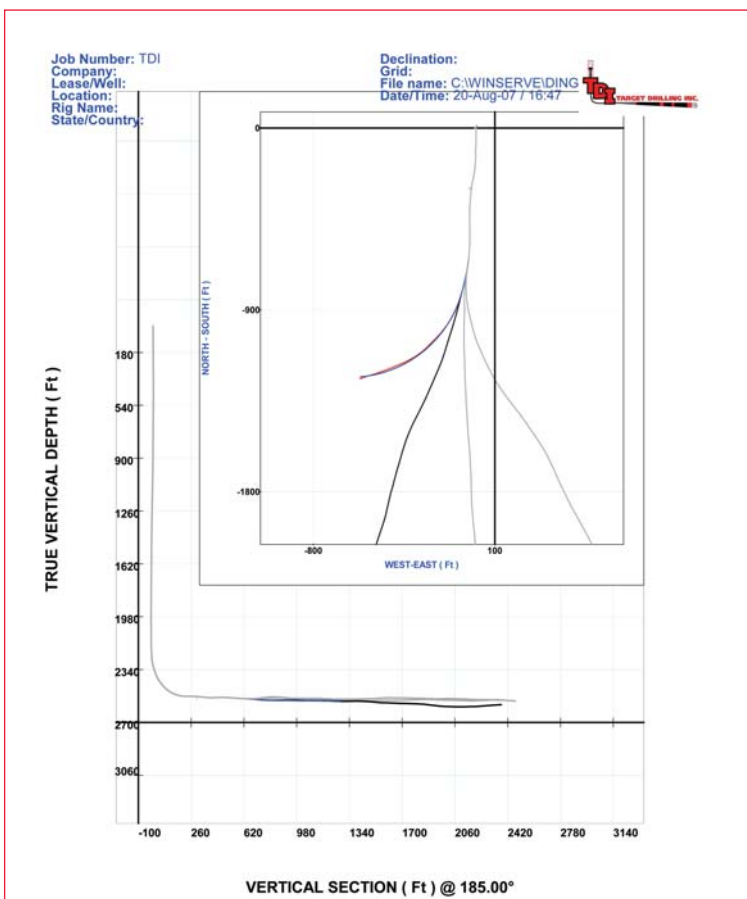


Conventional Gas Horizontals

Shallow Gas Recovery

Conventional shallow gas reservoirs are typically drilled on compressed air or air-foam (air+soap+additives) to depths of 5,000 feet, to maintain as dry a hole as possible without introducing drilling fluid (water and or water and bentonite slurry). This is because drilling fluid infiltrations at lithostatic pressure can "kill" the Pay-zone's potential for gas recovery. Furthermore, hydraulic fracturing of the Pay-zone(s), has not been economic, costing too much with little or no increase in gas production. Target Drilling has the unique capability to offer kicking-off the vertical conventional gas wells (and drilling the entire well) directionally to intercept the Pay-zone(s) horizontally and then continuing horizontal laterals in the Pay-zone(s) ALL DIRECTIONALLY DRILLED ON AIR-FOAM! Target's laterals can be directionally drilled on air-foam thousands of feet staying within the Pay-zone(s) to enhance connection with natural fractures maximizing gas production.



Target Drilling's Surface Directional UBD Capabilities

- Target Provides Turn-key, In-house Directional Drilling Operations By Owning and Operating ALL Drilling, Steering, and Auxiliary Equipment Used on the Job
- Target Can Directionally Drill Using its Turn-key, In-house Capabilities using Air-Foam to Power Downhole Motor's Specifically Designed for Air Foam Pre-mixed Before Injection Into the Directional Drill String

Key Benefits of Target Drilling's Turn-Key Services

- If One of Target's Owned and Operated Pieces of Equipment Is Down, You the Client, Does Not Get Charged for Standby or Delay Time for Equipment or Manpower
- As a True Turn-key, In-house Directional Driller, You the Client, Deal Day-to-Day with Only One Contractor – Target Drilling